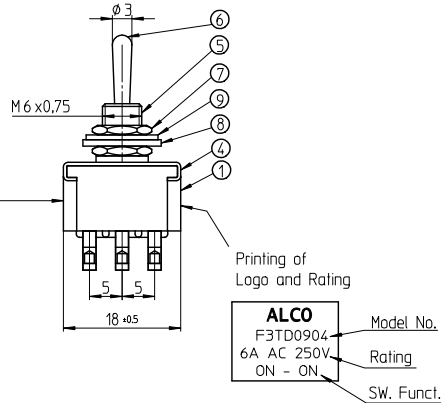
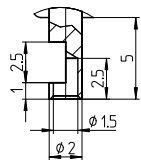
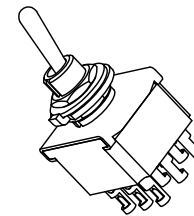
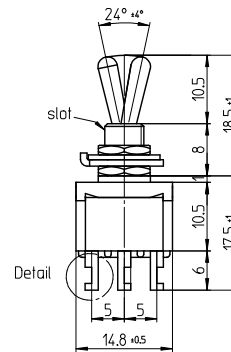
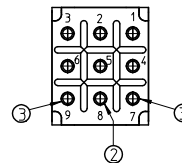


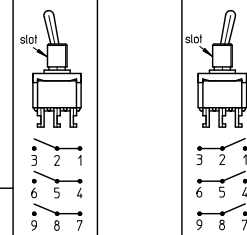
Detail  
Maßstab 5:1



**ALCO**  
F3TD0904 Model No.  
6A AC 250V Rating  
ON - ON SW. Funct.



Function Chart



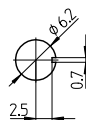
TE PN	Part	ON	---	ON
2-6437630-8	F3TD0904	ON	---	ON

Notes:

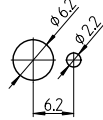
Operating temperature -20°C to +70°C

All materials and finishes comply with RoHS directive

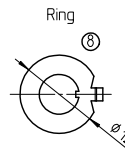
Panel Cutout



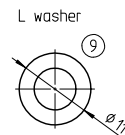
Panel Cutout using Ring



1.5 thick



1 thick



0.63 thick

Specifications

TE PN	Part	Rating	Initial Contact Resistance	Insulation Resistance	Dielectric Strength	Endurance
2-6437630-8	F3TD0904	AC 125V 6A AC 250V 6A	MAX 10 milliohms at DC 2 ~ 4V 1A	MIN 1000 M Ohms at DC 500V	AC 1kV/1 min (AC 1.2kV/1 sec)	electrically 50,000 cycles at 20 cycles/min (rated load resistive) mechanically 100,000 cycles at 20 cycles/min

Materials Chart

PART NO.	PART NAME:	MATERIAL/SURFACE:	OPTIONAL DESCRIPTION
1	Case	Polyester Resin	
2	F Contact	99.98% silver + C3602BD	Ep-Cu/Ni3,AuFb
3	Common	C3602BD	Ep-Cu/Ni3,AuFb
4	Frame	SUS	
5	Bushing	C3602BD	Ep-Cu/Ni3b
6	Actuator	C3602BD	Ep-Cu/Ni3,Cr1b
7	Nut	C3602BD	Ep-Cu/Ni3b
8	Ring	SPCC	Ep-Fe/Cu2,Ni3b
9	L washer	SK-5	Ep-Fe/Cu2,Ni4b

TOLERANCES UNLESS OTHERWISE SPECIFIED ACCORDING TO ISO 8015 and ISO 2768-1 DIMENSIONS: mm  
 last dimen. / Präzifmaß( ), auxiliary dimen. / Hilfmaß( ): theor. dimen. / theort. Maß( ),  
 production control dimen. / Fertigungsmaß( ): dimen. for measure. technology / mess techn. ret. Maß( ) [ ]

DEPARTMENT		D&E
DRAWER	03012007	SA00871
CHECKED		
APPROVED		

ECR-NO.: DATE NAME INFO

SCALE: NAME: DWG NO.: **1968516**

**Toggle Switch triple pole**  
Standard Lever

OPTIONAL NO.: Customer Drawing

REPLACEMENT FOR: DWG LOC NO.: F SHEET: 1 OF 1 REVISION: A A 2

THIS DRAWING IS A CONTROLLED DOCUMENT. HANDWRITTEN CHANGES ARE NOT ALLOWED

THIS INFORMATION IS CONFIDENTIAL AND PROPRIETARY TO TYCO ELECTRONICS AUSTRIA GMBH, AND ITS WORLDWIDE SUBSIDIARIES. ANY INFORMATION CONTAINED HEREIN IS NOT TO BE DISCLOSED TO ANYONE OTHER THAN TYCO ELECTRONICS AUSTRIA GMBH OR TYCO ELECTRONICS AUSTRIA GMBH'S AUTHORIZED REPRESENTATIVE.